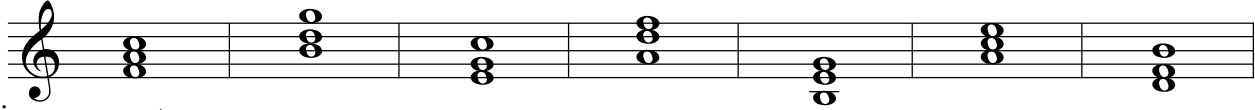


Inversion Worksheet - Triads

Directions: for measures 1-14, write the root and quality of the chord shown, its inversion, and its harmonic analysis in the indicated key.

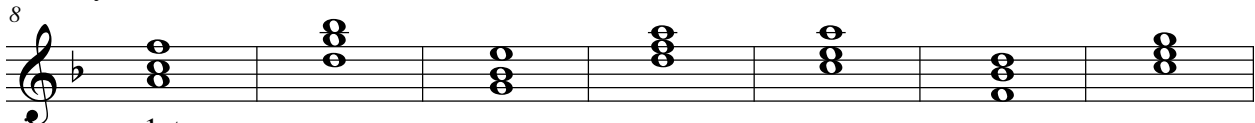
Root/Quality: FM



Inversion: root

Analysis: C: IV

Root/Quality: FM

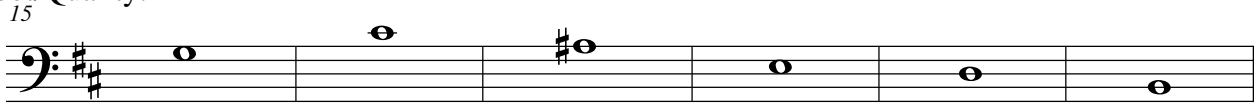


Inversion: 1st

Analysis: F: I⁶

Directions: for measures 15-26, assume that the given note is the lowest sounding note in the chord. Using the inversion shown, draw in the missing notes, write the chord's root and quality, and its harmonic analysis in the indicated key.

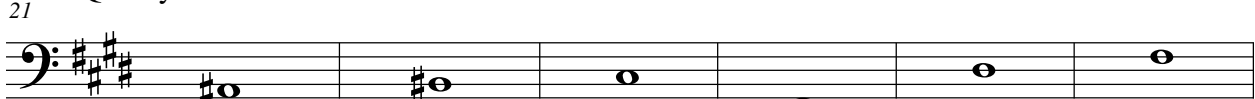
Root/Quality: Em



Inversion: 1st 1st 2nd 2nd root 1st

Analysis: b: iv⁶

Root/Quality: A#d



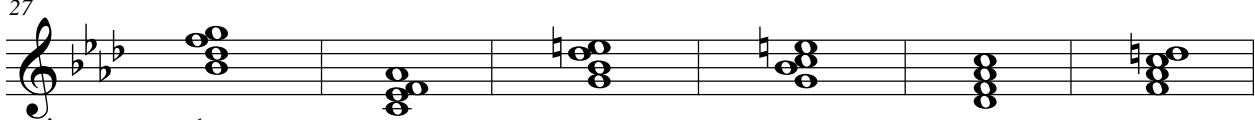
Inversion: root 1st 1st 2nd 2nd 1st

Analysis: c#: vii⁰

Inversion Worksheet - Seventh Chords

Directions: for measures 27-38, write the root and quality of the chord shown, its inversion, and its harmonic analysis in the indicated key.

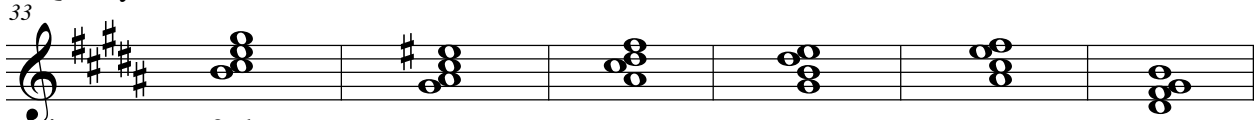
Root/Quality: Gdm



Inversion: 1st

Analysis: f: ii^{b6}₅

Root/Quality: C#mm

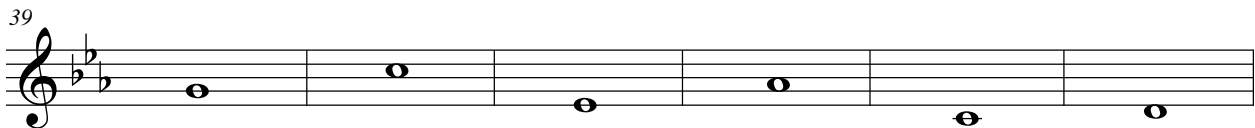


Inversion: 3rd

Analysis: g#: iv⁴₂

Directions: for measures 39-50, assume that the given note is the lowest sounding note in the chord. Using the inversion shown, draw in the missing notes, write the chord's root and quality, and its harmonic analysis in the indicated key.

Root/Quality: Cmm



Inversion: 2nd 1st 3rd 2nd 2nd 1st

Analysis: Eb: vi⁴₃

Root/Quality: F#dm



Inversion: root 2nd 1st 3rd 2nd 3rd

Analysis: G: vii^{o7}